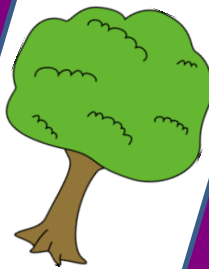


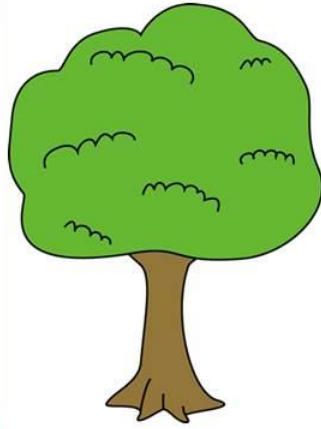
Rhyming Match Game

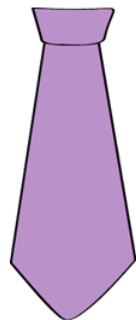
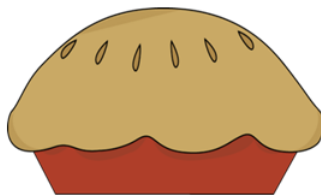
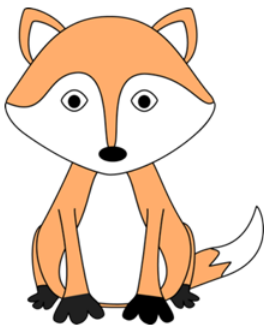
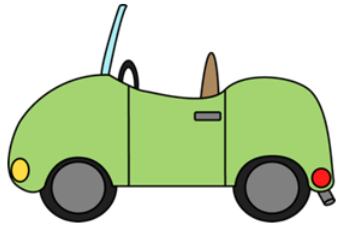


This is a simple rhyming game made up of 18 cards with 9 rhyming pairs. Players take turns matching the cards with the pictures turned face up or they can be turned face down for a game of concentration. It is great for phonemic awareness and can be used for small groups and independent centers for review. There are 2 follow up rhyming worksheets where students match rhyming pictures.

Print and cut out the cards. Glue onto construction paper or colored index cards and laminate for durability. Cut out the cover and glue on small manila envelope.

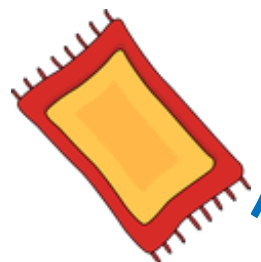
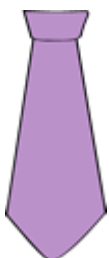
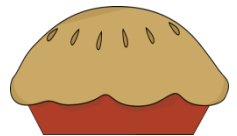
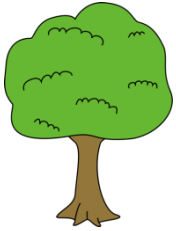
Pictures courtesy of: mycutegraphics





Name _____

Match the rhyming pairs.



Name _____

Match the rhyming pairs.

